

2000 Bloomingdale Road  
Units 245-250  
Glendale Heights, IL 60139

Phone: (630) 893-1720  
FAX: (630) 893-9991  
Web: [www.omnivisionusa.com](http://www.omnivisionusa.com)  
Email: [info@omnivisionusa.com](mailto:info@omnivisionusa.com)

**5"**  
**Monochrome CRT**  
**Open Frame, Box or Kit**  
**Monitor**



**LP05... series product**  
**See table below for model numbers**

This Omni Vision monitor is offered in an open frame chassis or as a kit version product for applications where a small display is required and the input signal can be composite video or TTL or analog video with TTL sync. This low power CRT module is a great solution. The 5" CRT provides great viewing angles and higher brightness levels. The main circuit board is made of industrial grade epoxy/fiber glass reinforced material with an FR4 rating.

**Detail Specification:**

CRT size	5"	Horizontal frequency	15 to 35 kHz +/- 500 Hz
		Vertical frequency	50 or 60 Hz
Phosphor	White P4	Video Response	From 20 to 26 MHz
Viewing Area	15 sq in maximum	Max Resolution	800x600 @ 60 Hz
Scanning	Interlaced & non-interlaced	Display Color	Unlimited Gray Scale
Agency Approvals	UL, cUL, TUV	Agency Compliance	FDA, CE, FCC
Dimensions (HxWxD)	See mechanical drawing Low profile 94-005 Box 94-006	Net Weight (lbs.)	depends on product version kit or chassis

**General Information:**

- On board service controls Brightness, Contrast, Focus, Horizontal (Size, Centering, Hold), Vertical (Size, Centering, and Linearity)
- Optional remote brightness and contrast interface available
- Input signal type standard - Analog Video - 0 to 0.7 volts  
Horizontal & Vertical Sync Signals - TTL level 0 to 5 volts
- Signal Connectors - Standard card edge connector
- Input Power - Standard +12 vdc @ 1.5 A (typical)
- Input Power Connector - Standard card edge connection
- Temperature - Operating from 0 to +55 degrees C  
Storage from -20 to +65 degrees C

**Model numbering - LP05xxyz-?**

			Options
xx	Is for frequency	Horizontal (kHz)	Typically 15, 18, 21, 31, or 35
y	Chassis	Composite video	Equals "G" for NTSC or PAL or unique
		TTL	Equals "E" for std TTL or analog video w/TTL sync
zz	OVI assigned	Alpha numeric	1-9, A-Z, or combination of alpha number
?	Phosphor		P4 for white, P31 for green, or LA for amber

2000 Bloomingdale Road  
 Units 245-250  
 Glendale Heights, IL 60139

Phone: (630) 893-1720  
 FAX: (630) 893-9991

Web: [www.omnivisionusa.com](http://www.omnivisionusa.com)  
 Email: [info@omnivisionusa.com](mailto:info@omnivisionusa.com)

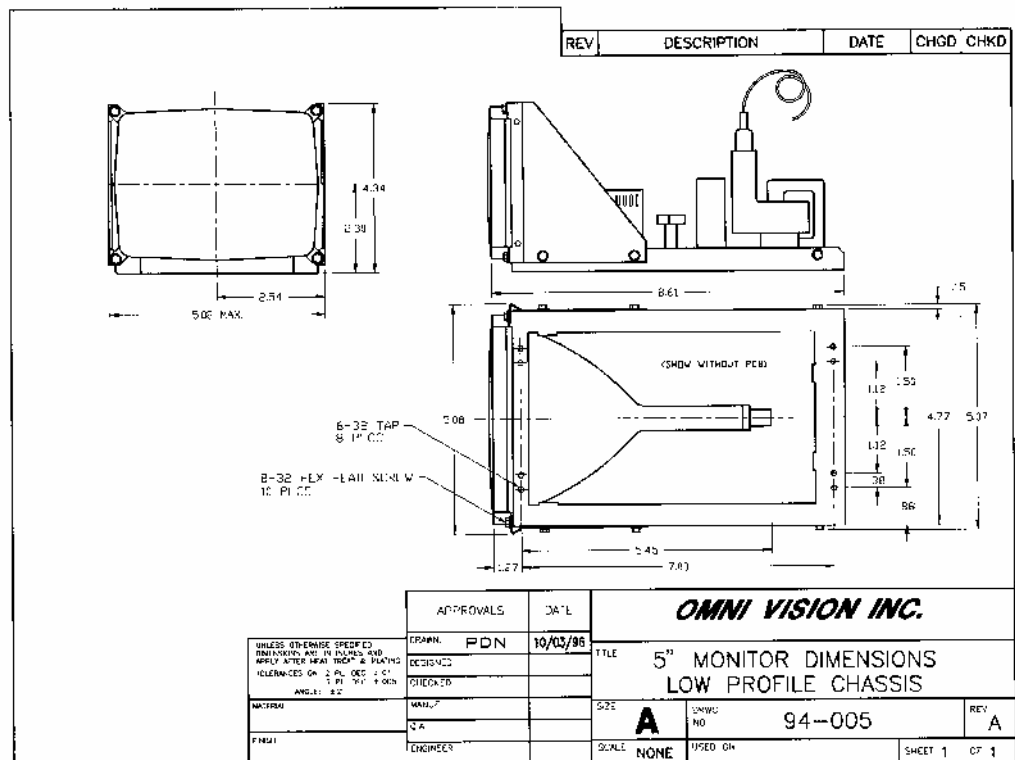
**Features -**

- All circuitry is on a single, double sided, plated through PCB.
- All controls are easily accessible from the top of monitor.
- The video display is stabilized through the use of a voltage controlled, temperature compensated feedback to synchronized free run oscillator.
- Electronic horizontal video centering.
- Geometric distortion - within 2 % EIS Standard Dot/Ball Chart or variation between adjacent characters not more than 10 % in alpha numeric display applications
- High Voltage - Over 8 kV at 50 microamperes of beam current with no more than 0.5 kV variation from zero beam to 100 microamperes beam current.

**Additional detail specifications -**

<b>TTL signals</b>		
Signal	Positive polarity	+ 2.5 v to 5.0 v
Video	Input Impedance	470 ohms
	Bandwidth	Within 3 db from 10 Hz to 26 kHz
Vertical	Input Impedance	Greater than 1k Ohms
	Typical Signal	180 micro seconds
Horizontal	Input Impedance	Greater than 6k Ohms
	Typical Signal	2.5 to 8 micro seconds
<b>Composite video</b>		
Signal	Positive video - negative sync	0.7 v to 1.8 v peak to peak composite
	Input Impedance	75 Ohms
	Bandwidth	Within 3 db from 10 Hz to 26 kHz

**Drawing 94-005**



2000 Bloomingdale Road  
Units 245-250  
Glendale Heights, IL 60139

Phone: (630) 893-1720  
FAX: (630) 893-9991  
Web: [www.omnivisionusa.com](http://www.omnivisionusa.com)  
Email: [info@omnivisionusa.com](mailto:info@omnivisionusa.com)

**Box chassis model -**



**Drawing 94-006**

