

Omni Vision Inc
504 Congress Circle North
Unit B
Roselle, IL 60172

Display Monitor Specialist

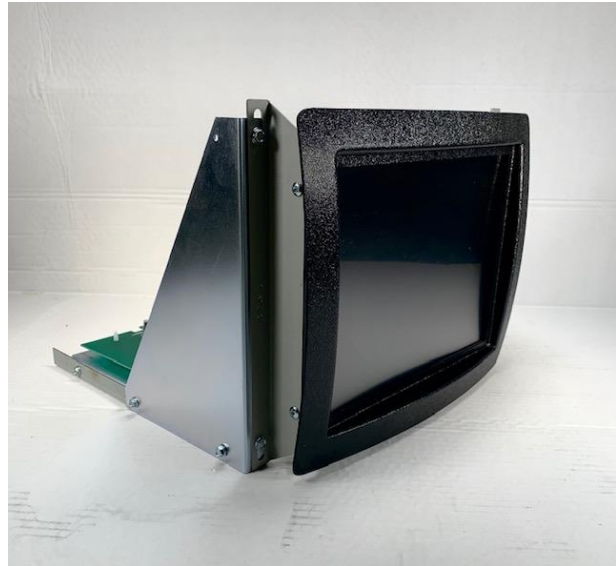
Tel: 630-893-1720
FAX: 630-893-9991
Web: www.omnivisionusa.com
Email: info@omnivisionusa.com

Industrial TFT Color LCD Display Monitors
10.4" Chassis Version Model – MN10B4G1-HMV

Replacement for 12" monochrome CRT

Made in the USA

Composite	Model #	
AC version – with bezel	MN10B4G1-HMV	Input 110/220 VAC



FEATURES

- Same easy to mount open frame, metal chassis as monochrome CRT monitors
- Bezel to match CRT curvature
- User service controls of brightness, contrast, auto set up, etc
- User service controls accessed in rear
- Input signals –15.7 khz composite
- Input signal connector – thru standard BNC adapter
- Standard Model Has anti-reflective polycarbonate protective
- Input power flexibility –100-240 VAC @ 47 to 63hz
- **RoHS compliant**
- Safety agency compliance - UL, cUL, and others
- Standard model has anti-reflective polycarbonate protective panel attached to face of LCD panel.

Omni Vision Inc
504 Congress Circle North
Unit B
Roselle, IL 60172

Display Monitor Specialist

Tel: 630-893-1720
 FAX: 630-893-9991
 Web: www.omnivisionusa.com
 Email: info@omnivisionusa.com

SPECIFICATIONS

Active Matrix	10.4" TFT color LCD (264.1 mm diagonal)
Usable Viewing Area (Size)	8.31" x 6.29" (211.2 x 158.4 mm)
Viewing Angle	Horizontal - right & left 60 degrees Vertical - upper 35 degrees & lower 65 degrees
Dot Pitch	0.264 x 0.264 mm
Max Resolution	800 x 600
Max Colors	262K colors (RGB 6-bit driver)
Response Time	Rise time - 10 millisecc (typical) Fall time - 25 millisecc (typical)
Horizontal Frequency	15.7 to 60 kHz
Vertical Frequency	56 to 85 Hz
Brightness (full white)	230 nits
Contrast Ratio	500:1
Input Signal	
NTSC/PAL MODEL	15.7 kHz @ 60 hz(NTSC) & 15.6 khz @ 50 hz (pal) standard composite video (0.7 volts p-p)
Power input	
AC voltage input	Standard 100-240 VAC auto ranging @ 47 to 63 hz Thru special connector or 3-wire AC power cord
Temperature	
Operating	0 to +50 degrees C
Storage	-20 to +60 degrees C

Mechanical Details

	Model #	Drawing #
10.4" LCD monitor	MN10B4G1-HMV	N/A